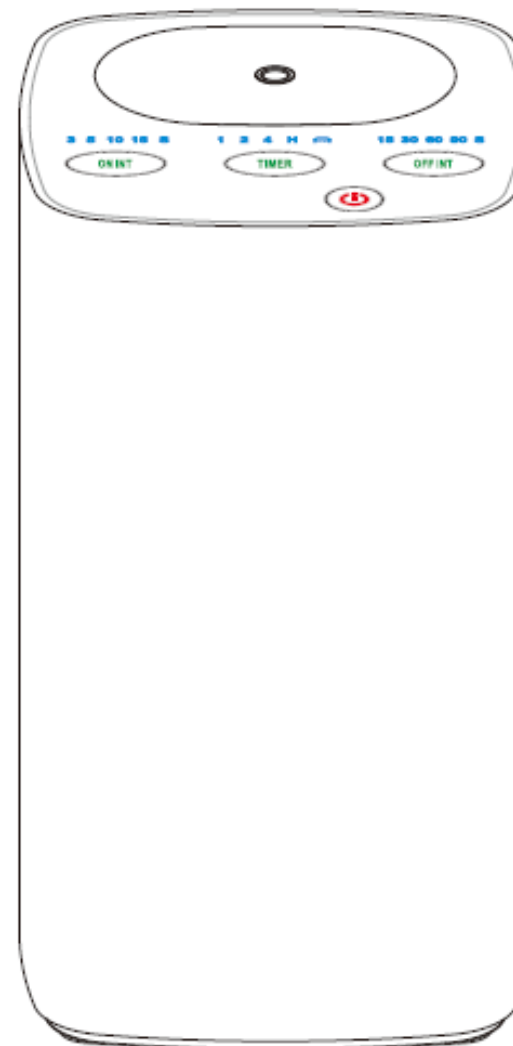
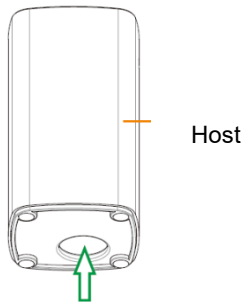
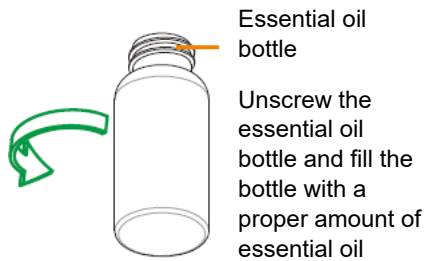
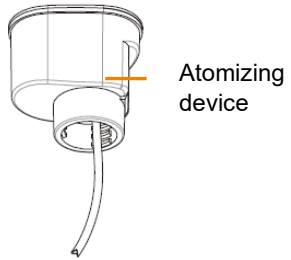


EN Manual Waterless diffuser TOWER

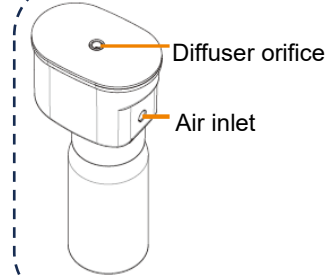


BEWIT Natural Medicine s.r.o.
Michalská 2030,
710 00 Ostrava
Tel.: (+420) 731 739 539
Email: info@bewit.cz
www.BEWIT love

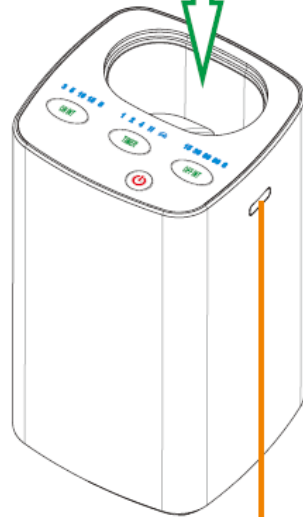
Installation Icon:



Use your finger to push out the atomizer from the bottom



Atomizing device Plug into the host

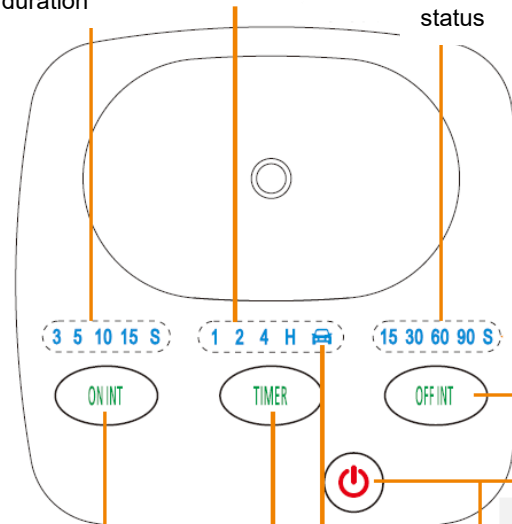


Panel Function:

Flashing indicator: this function is not active for the set duration

Steady light: this function is active for the duration it is set.

Flashing light: non-execution state; Steady on: execution status



Button to set the mist-free duration

Mist timer button to set the duration

Timer button for diffuser operation

Power key
Press and hold for 2s to turn on and off.

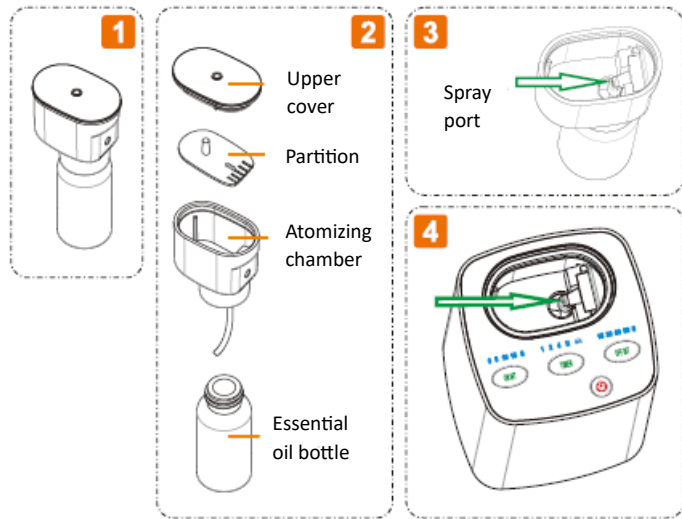
Power:

- Power shortage, red light flashes
- When charging, breathing light
- When fully charged, green light
- Different battery levels correspond to different color indicators.

Vehicle start-up mode (When vibration is sensed, the work starts. If there is no vibration for 1 minute, it will enter the sleep state. The next vibration will automatically wake up the work. If it sleeps continuously for 24 hours, the device will automatically shut down)

Remark: If the device is tipped over 45°, the air pump will stop working immediately and the indicator light will flash to indicate. If the tipping continues for 1 minute, the device will automatically shut down.

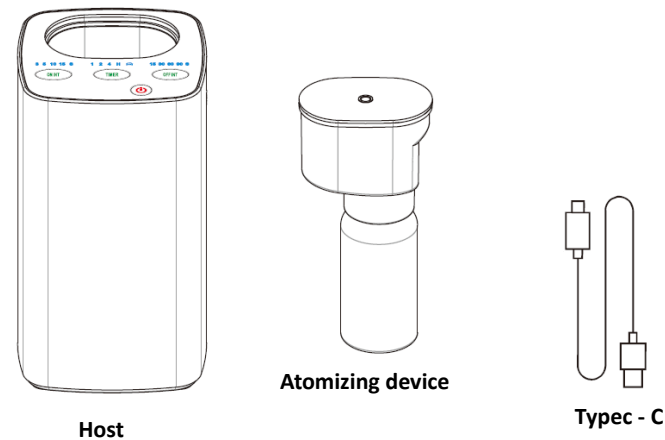
Care and Maintenance:



I fit is not used for a long time or the amount of mist has weakened, please follow the steps below:

1. Take out the atomization device from the main unit (fig. 1) and disassemble the atomizing device (fig. 2)
2. Clean the essential oil bottle, atomization chamber, partition, and upper cover (the upper cover has stickers and cannot be soaked in water for cleaning).
3. Fill the essential oil bottle with a small amount of warm water or alcohol, and then install the essential oil bottle under the atomization chamber, Fig. 3
4. Insert fig.3 into the host (fig.4), start the device, and when the air pump is working (you can click „ON INT“ continuously), you can see the water column spraying out from the spray port at the arrow.
5. If the sprayed water column is very small, it may be that the oil suction channel is blocked by impurities or the viscous essential oil has dried up and blocked it. Please press the spray port at the arrow with your finger for about 2s when the water column sprays out, release it for about 2s, cycle 5-10 times, and replace with warm water or alcohol. Repeat this step until the sprayed port in fig. 3 to spray out foreign objects. It is strictly forbidden to use sharp objects to remove the holes.
6. Push out the atomizing device from the bottom of the main unit. After drying inside and outside, install it back to the partition and upper cover.

Components:



Safety Rules:

1. After the product is installed with essential oil, it cannot be turned over to avoid leakage of essential oil.
2. Do not disassemble or modify this product for any reason to avoid product damage.
3. Please use it in an environment of 10 °C – 50 °C
4. If you do not use this product for a long time, please take out the essential oil bottle and keep it in a safe place.
5. Do not place the product where children and pets can reach.