

BEWIT FRANCHISE, s.r.o.
Michalská 2030,
Slezská Ostrava,
710 00 Ostrava
IČO: 29443237
BEWIT.LOVE, SHARE.LOVE



GC ANALYSIS REPORT

DESCRIPTION / POPIS

NAME / NÁZEV	INCI NAME	CAS-No
BEWIT LEARNING		-

SPECIFICATION / SPECIFIKACE

ORIGIN / PŮVOD	SUPPLIER / DODAVATEL	COLOUR / BARVA
Czech Republic	BEWIT FRANCHISE, s.r.o.	Pale yellow, clear

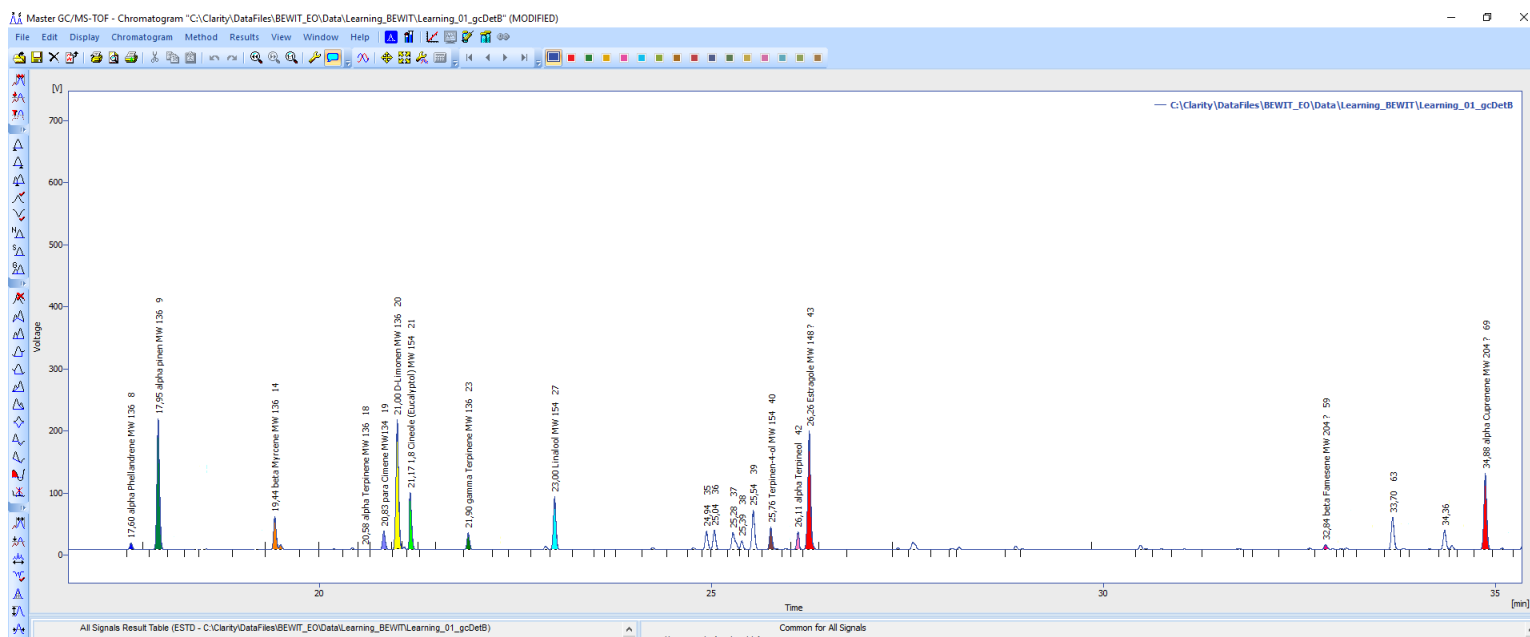
ODOUR / VŮNĚ, ZÁPACH	APPEARANCE / VZHLED	FLASH POINT [°C] / BOD VZPLANUTÍ
Citrus, peppermint	Clear liquid	-

COMPONENTS / SLOŽKY

COMPOUND / SLOUČENINA	RELATIVE CONTENT / OBSAH [%]	RETENTION TIME / RETENČNÍ ČAS
α -Pinen	17,6	17,95
D-Limonen	17,5	20,99
Estragole	17,4	26,26
α -Cuprenene	10,9	34,88
1,8 Cineole	7,6	21,17
Linalool	7,1	23,00
β -Myrcene	5,2	17,44
(E)-Atlantone	4,1	40,79
Terpinen-4-ol	3,2	25,77
Para-Cymene	2,6	20,83
α -Terpineol	2,4	26,11
γ -Terpinene	2,3	21,90

β-Famesene	1,0	32,84
α-Phellandrene	1,0	17,60
α-Terpinene	0,1	20,58

CHROMATOGRAM WITH IDENTIFICATION PEAKS



Signal Name	Reten. Time [min]	Response	Peak Type	Area [%]	Compound Name
8	17,599	26,516	Ordnr	1,0	alpha Phellandrene MW 136
9	17,947	480,183	Ordnr	17,6	alpha pinen MW 136
14	19,435	141,285	Ordnr	5,2	beta Myrcene MW 136
18	20,579	2,053	Ordnr	0,1	alpha Terpinene MW 136
19	20,829	70,363	Ordnr	2,6	para Cimene MW 134
20	20,997	476,827	Ordnr	17,5	D-Limonen MW 136
21	21,167	206,582	Ordnr	7,6	1,8 Cineole (Eucalyptol) MW 15
23	21,903	63,381	Ordnr	2,3	gamma Terpinene MW 136
27	23,003	193,335	Ordnr	7,1	Linalool MW 154
40	25,765	87,883	Ordnr	3,2	Terpinen-4-ol MW 154
42	26,105	66,405	Ordnr	2,4	alpha Terpineol
43	26,256	473,877	Ordnr	17,4	Estragole MW 148 ?
59	32,839	27,926	Ordnr	1,0	beta Famesene MW 204 ?
69	34,876	298,277	Ordnr	10,9	alpha Cuprenene MW 204 ?
93	40,789	110,450	Ordnr	4,1	(E)-Atlantone MW 218 ?
All Signals Total				100,0	